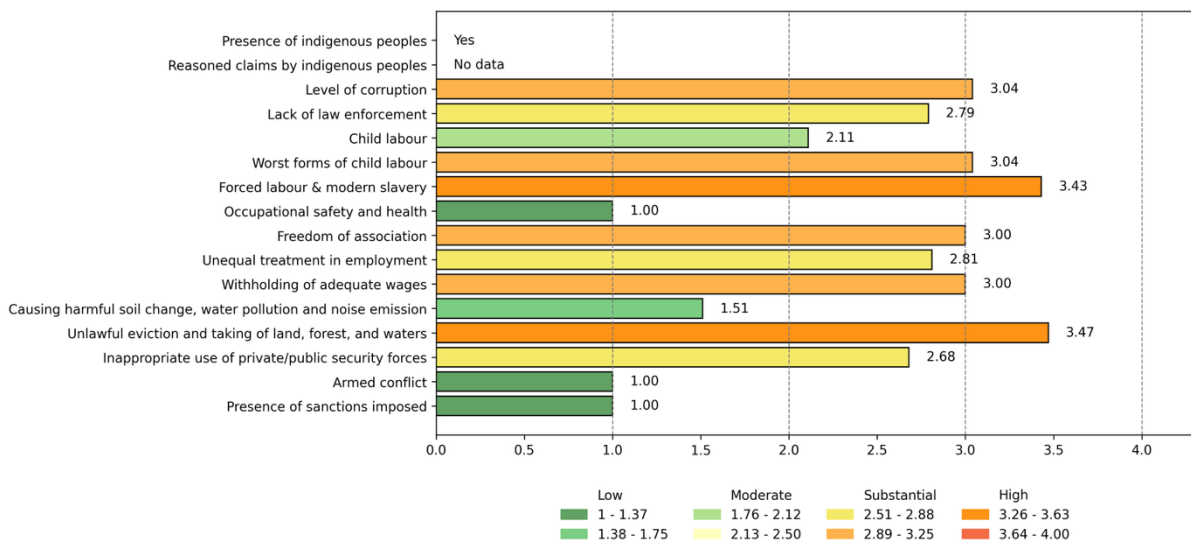


# EL SALVADOR



## Risk Scores for governance and human rights indicators

The results of the indices and statistical approach are based on a national level.



For the indicators "Worst forms of child labour" and "Forced labour & modern slavery", some of the datasets used relate to the coffee sector.

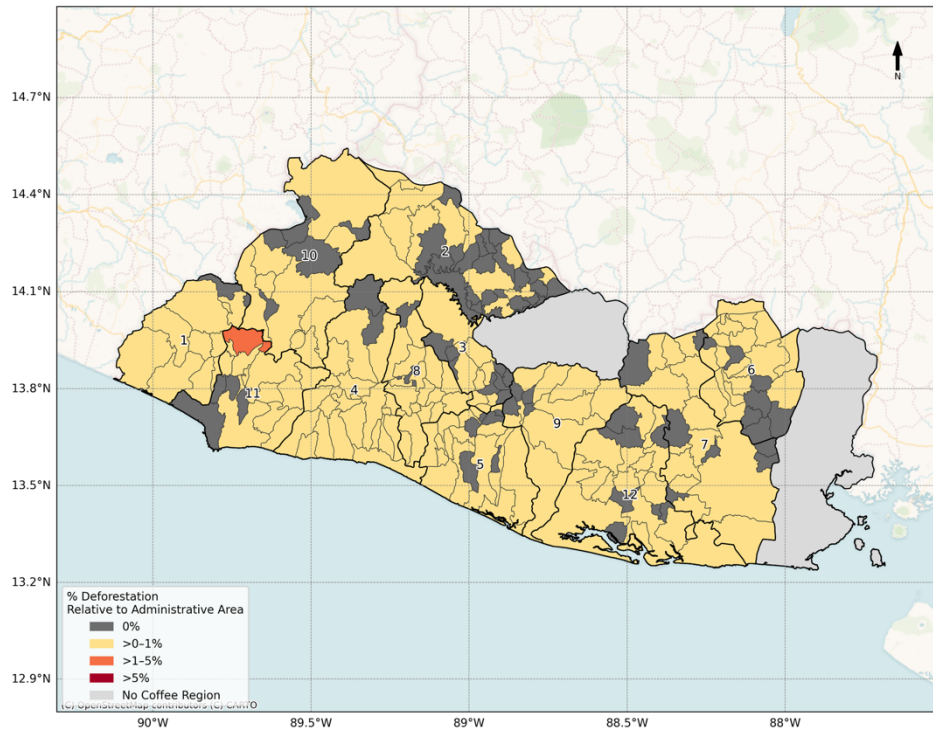


### Indigenous people

The "Indigenous World 2025" report did not include any information on the country's indigenous population for El Salvador.

Source: International Work Group for Indigenous Affairs (IWGIA), *The Indigenous World 2025*, (New York: Dwayne Mamo, 2025)

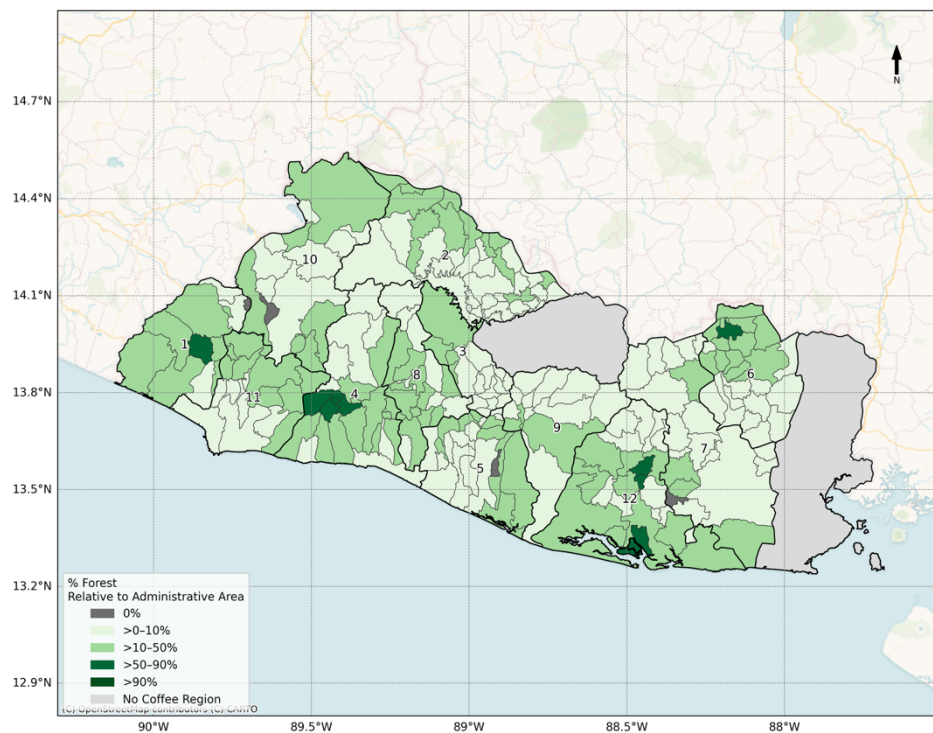
## Percentage of deforestation area



ID	Department
1	Ahuachapán
2	Chalatenango
3	Cuscatlán
4	La Libertad
5	La Paz
6	Morazán
7	San Miguel
8	San Salvador
9	San Vicente
10	Santa Ana
11	Sonsonate
12	Usulután

Reference:  
GRAS deforestation risk estimation 2024

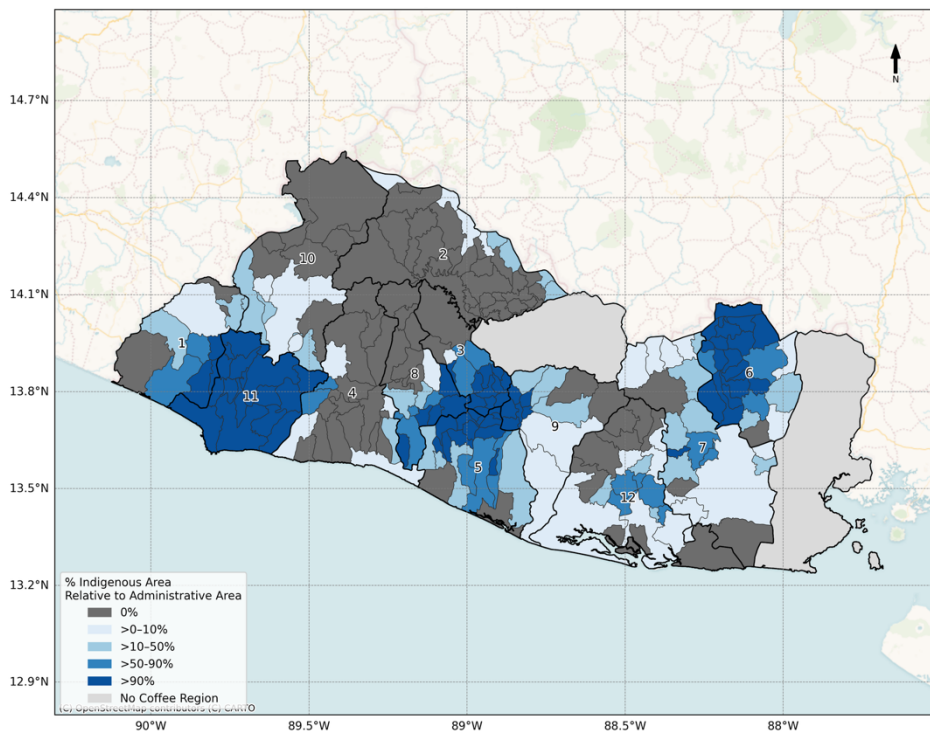
## Percentage of forest area



ID	Department
1	Ahuachapán
2	Chalatenango
3	Cuscatlán
4	La Libertad
5	La Paz
6	Morazán
7	San Miguel
8	San Salvador
9	San Vicente
10	Santa Ana
11	Sonsonate
12	Usulután

Reference: GRAS Forest Map 2020

## Percentage of indigenous area



ID	Department
1	Ahuachapán
2	Chalatenango
3	Cuscatlán
4	La Libertad
5	La Paz
6	Morazán
7	San Miguel
8	San Salvador
9	San Vicente
10	Santa Ana
11	Sonsonate
12	Usulután

Reference:

IUCN, Gland, Switzerland in collaboration with IUCN Regional Office for Mexico, Central America and the Caribbean 2021



For a better insight at the subnational level, use the interactive map: [EL SALVADOR](#)

(Access to the interactive online maps requires a registration under <https://eudr-coffee.eu>)

### Disclaimer:

The information given on this fact sheet is non-exclusive, non-binding and non-mandatory, other authors or sources might conclude different risk results or potential mitigation measures than the ones provided in this document.

### Copyright notice

© 2025 Global Risk Assessment Services GmbH

This GRAS document is protected by copyright. No part of this document may be changed or amended. GRAS provides a compilation of information from databases and processed satellite imagery. GRAS takes no responsibility in misleading or wrong information.