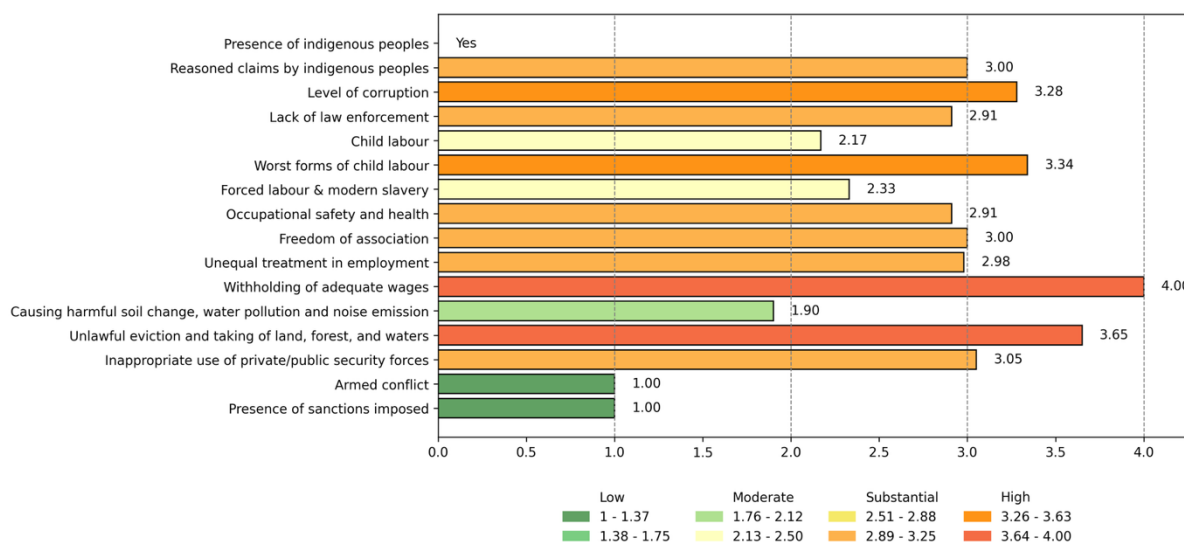


KENYA



Risk Scores for governance and human rights indicators

The results of the indices and statistical approach are based on a national level.



For the indicators "Worst forms of child labour" and "Forced labour & modern slavery", some of the datasets used relate to the coffee sector.

Indigenous people

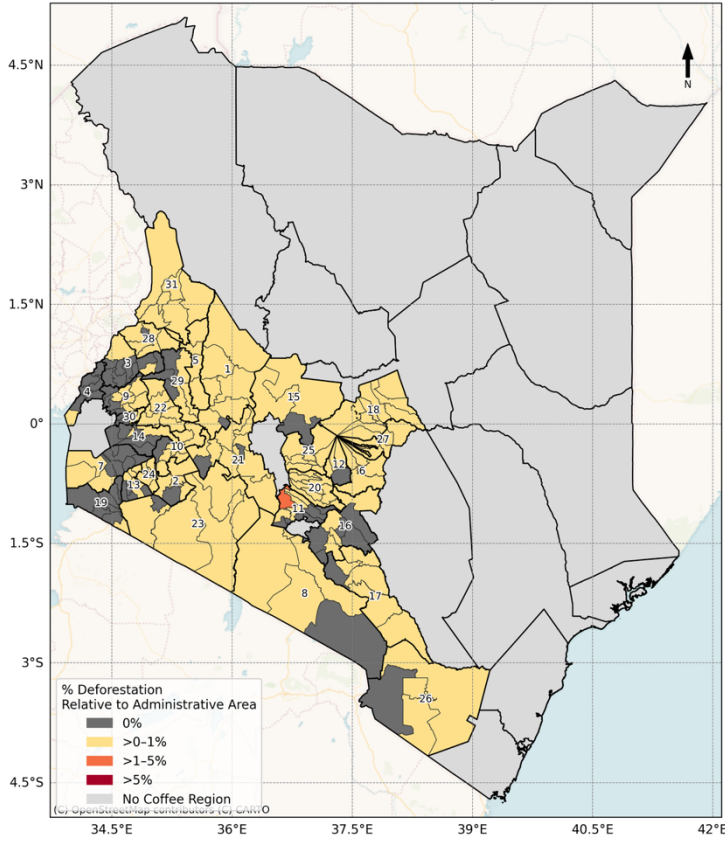
The peoples who identify with the Indigenous movement in Kenya are mainly pastoralists and hunter-gatherers, as well as fisher peoples and small farming communities. Pastoralists, estimated to comprise 25% of the population, occupy the arid and semi-arid lands of northern Kenya and towards the border with Tanzania and include the Turkana, Rendille, Borana, Maasai, Samburu, Ilchamus, Somali, Gabra, Pokot, Endorois and others. Hunter-gatherers include the Ogiek, Sengwer, Yiaku, Waata and Awer (Boni) and the largest individual community numbers approximately 79,000. They all face land and resource tenure insecurity, poor service delivery, poor political representation, discrimination and exclusion, and their situation seems to get worse each year.



Kenya has ratified the International Convention on the Elimination of All Forms of Racial Discrimination (ICERD), the Convention on the Elimination of Discrimination against Women (CEDAW) and the Convention on the Rights of the Child (CRC) but not the UN Declaration on the Rights of Indigenous Peoples (UNDRIP) or ILO Convention 169. The Kenyan Constitution contains a progressive Bill of Rights that makes international law a key component of the laws of Kenya and guarantees protection of minorities and marginalized groups, freedom of expression, the media, and access to information and association, however, the principle of Free, Prior and Informed Consent (FPIC) remains a challenge for Indigenous Peoples.

Source: International Work Group for Indigenous Affairs (IWGIA), *The Indigenous World 2025*, (New York: Dwayne Mamo, 2025)

Percentage of deforestation area



ID	County	ID	County
1	Baringo	17	Makueni
2	Bomet	18	Meru
3	Bungoma	19	Migori
4	Busia	20	Murang'a
5	Elgeyo-Marakwet	21	Nakuru
6	Embu	22	Nandi
7	Homa Bay	23	Narok
8	Kajiado	24	Nyamira
9	Kakamega	25	Nyeri
10	Kericho	26	Taita Taveta
11	Kiambu	27	Tharaka-Nithi
12	Kirinyaga	28	Trans Nzoia
13	Kisii	29	Uasin Gishu
14	Kisumu	30	Vihiga
15	Laikipia	31	West Pokot
16	Machakos		

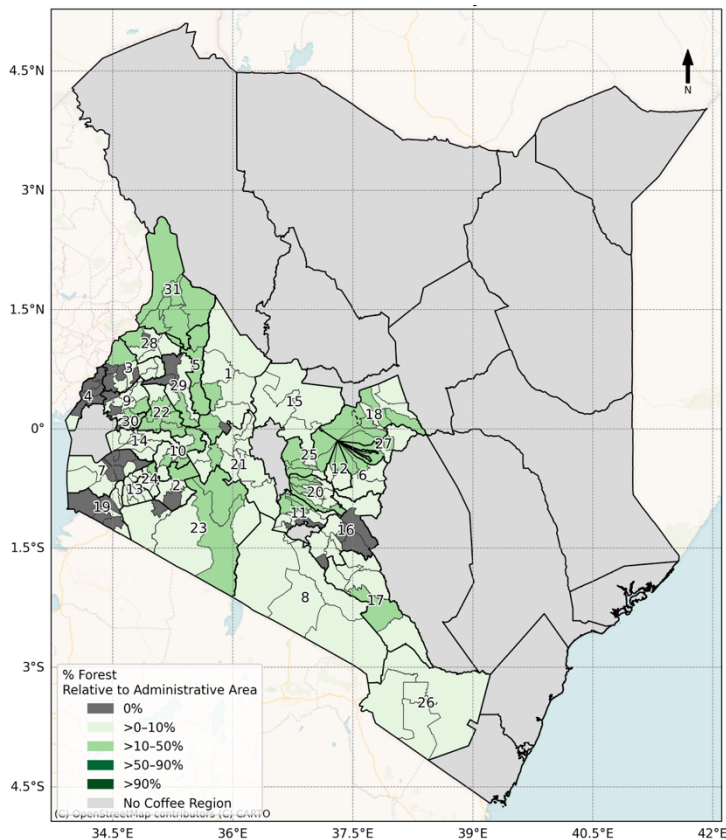
Reference: GRAS deforestation risk estimation 2024



For a better insight at the subnational level, use the interactive map: [KENYA](#)

(Access to the interactive online maps requires a registration under <https://eudr-coffee.eu>)

Percentage of forest area



ID	County	ID	County
1	Baringo	17	Makueni
2	Bomet	18	Meru
3	Bungoma	19	Migori
4	Busia	20	Murang'a
5	Elgeyo-Marakwet	21	Nakuru
6	Embu	22	Nandi
7	Homa Bay	23	Narok
8	Kajiado	24	Nyamira
9	Kakamega	25	Nyeri
10	Kericho	26	Taita Taveta
11	Kiambu	27	Tharaka-Nithi
12	Kirinyaga	28	Trans Nzoia
13	Kisii	29	Uasin Gishu
14	Kisumu	30	Vihiga
15	Laikipia	31	West Pokot
16	Machakos		

Reference: GRAS forest base map 2020

Disclaimer:

The information given on this fact sheet is non-exclusive, non-binding and non-mandatory, other authors or sources might conclude different risk results or potential mitigation measures than the ones provided in this document.

Copyright notice

© 2025 Global Risk Assessment Services GmbH

This GRAS document is protected by copyright. No part of this document may be changed or amended. GRAS provides a compilation of information from databases and processed satellite imagery. GRAS takes no responsibility in misleading or wrong information.